

2026 SORENTO LX FWD

MODEL/OPT.CODE: 73222 / 010
 EXTERIOR COLOR: GLACIAL WHITE PEARL
 INTERIOR COLOR: BLACK
 VEHICLE ID NUMBER: 5XYRG4JC6TG436370
 PORT OF ENTRY: WEST POINT

Sold To: NC044
 Joey Griffin Kia
 3249 N. CHURCH STREET
 ROCKY MOUNT NC 27804

Ship To: NC044



STANDARD FEATURES

MECHANICAL
 2.5L Gas Direct Injection (GDI) 4-Cyl Engine
 8-Speed Automatic Transmission
 Drive Mode Select

ADVANCED DRIVER-ASSISTANCE SYSTEMS
 Forward Collision-Avoidance Assist - Cyclist/Jct Turning
 Blind-Spot Collision Warning
 Rear Cross-Traffic Collision-Avoidance Assist
 Lane Keeping Assist & Lane Following Assist
 Driver Attention Warning & High Beam Assist
 Safe Exit Assist
 Smart Cruise Control w/Stop & Go

SAFETY
 Dual Front Advanced Airbags & Driver's Knee Airbag
 Dual Front and Rear Seat-Mounted Side Airbags
 Full-Length Side Curtain Airbags
 Electronic Stability Control
 Tire Pressure Monitoring System
 Power Rear Door Child Locks

INTERIOR, COMFORT & CONVENIENCE
 12.3" Touchscreen w/Wireless Android Auto & Apple CarPlay
 Kia Connect w/Comp 3-Yr Ultimate.* Where Available**
 SIRIUSXM® w/Free 3-Mo. Subscription*
 Rear View Camera with Dynamic Guidelines
 4.0" Instrument Display
 Front & Rear USB Charge Ports
 Steering Wheel Controls (Bluetooth/Audio/Cruise)
 Smart Key w/ Push Button & Remote Start
 One-Touch Slide & Fold 2nd Row Seats
 Leather Wrapped Steering Wheel & Shift Knob
 Rear Occupant Alert w/ Sensors

EXTERIOR
 17" Alloy Wheels
 LED Projector Headlights w/ Auto-On/Off
 LED Positioning Lights
 Power Adj. Heated Outside Mirrors w/LED Turn Signals
 Compact Spare Tire

WARRANTY
 10 Year/100,000 Mile Limited Powertrain Warranty
 5 Year/60,000 Mile Limited Basic Warranty
 5 Year/60,000 Mile Roadside Assistance

MANUFACTURER'S SUGGESTED RETAIL PRICE ▶

\$ 32,190.00

ADDITIONAL INSTALLED EQUIPMENT:
 (In addition to or in place of standard features)
 Glacial White Pearl Paint \$495.00
 Carpeted Floor Mats \$235.00

MSRP INCLUDING OPTIONS

\$ 32,920.00

INLAND FREIGHT AND HANDLING

\$ 1,445.00

TOTAL MANUFACTURER'S SUGGESTED RETAIL PRICE ▶

\$ 34,365.00

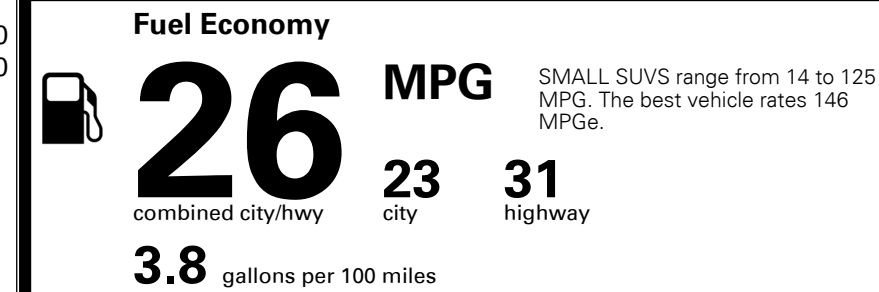
*Additional terms and conditions apply.
 **Kia Connect may be currently unavailable for some Model Year 2022 and newer vehicles sold or purchased in Massachusetts; please see owners.kia.com for more information.
 NOTE: When you purchase this vehicle, Kia America, Inc. collects personal information you provide to the dealership. For information on our collection and use of personal information and your rights, please see our Privacy Policy on www.kia.com.

TOTAL ADDITIONAL WEIGHT: 6.6



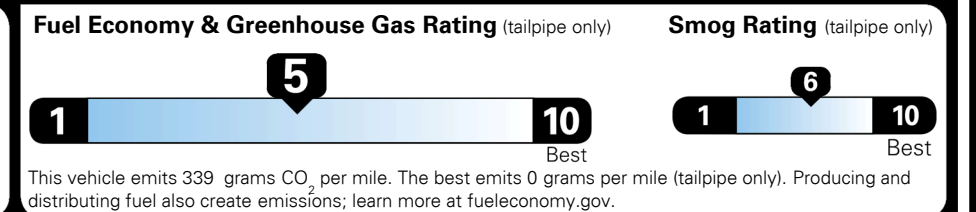
EPA DOT Fuel Economy and Environment

Gasoline Vehicle



You spend \$1,000 more in fuel costs over 5 years compared to the average new vehicle.

Annual fuel cost \$1,900



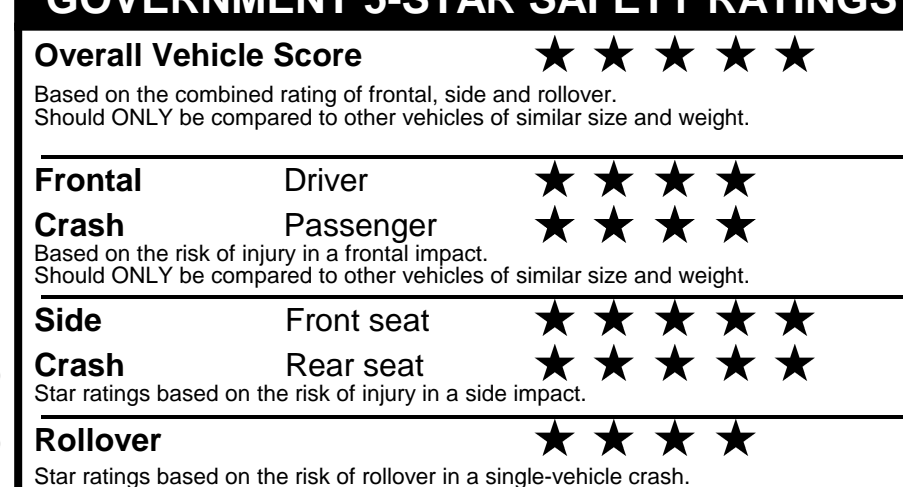
Actual results will vary for many reasons, including driving conditions and how you drive and maintain your vehicle. The average new vehicle gets 29 MPG and costs \$8,500 to fuel over 5 years. Cost estimates are based on 15,000 miles per year at \$ 3.30 per gallon. MPGe is miles per gasoline gallon equivalent. Vehicle emissions are a significant cause of climate change and smog.

fueleconomy.gov

Calculate personalized estimates and compare vehicles



GOVERNMENT 5-STAR SAFETY RATINGS



Star ratings range from 1 to 5 stars (★★★★★) with 5 being the highest. Source: National Highway Traffic Safety Administration (NHTSA). www.safercar.gov or 1-888-327-4236

Manufacturer's suggested retail price includes Manufacturer's recommended pre-delivery service. License and title fees, state and local taxes and other dealer installed options and accessories are not included in the manufacturer's suggested retail price.

PARTS CONTENT INFORMATION

FOR VEHICLES IN THIS CAR LINE U.S./CANADIAN PARTS CONTENT: 55 %

MAJOR SOURCES OF FOREIGN PARTS: KOREA: 30%

NOTE: PARTS CONTENT DOES NOT INCLUDE FINAL ASSEMBLY, DISTRIBUTION, OR OTHER NON-PARTS COSTS.

FOR THIS VEHICLE FINAL ASSEMBLY POINT: WEST POINT, GA, USA

COUNTRY OF ORIGIN ENGINE (MOTOR): USA

TRANSMISSION: USA